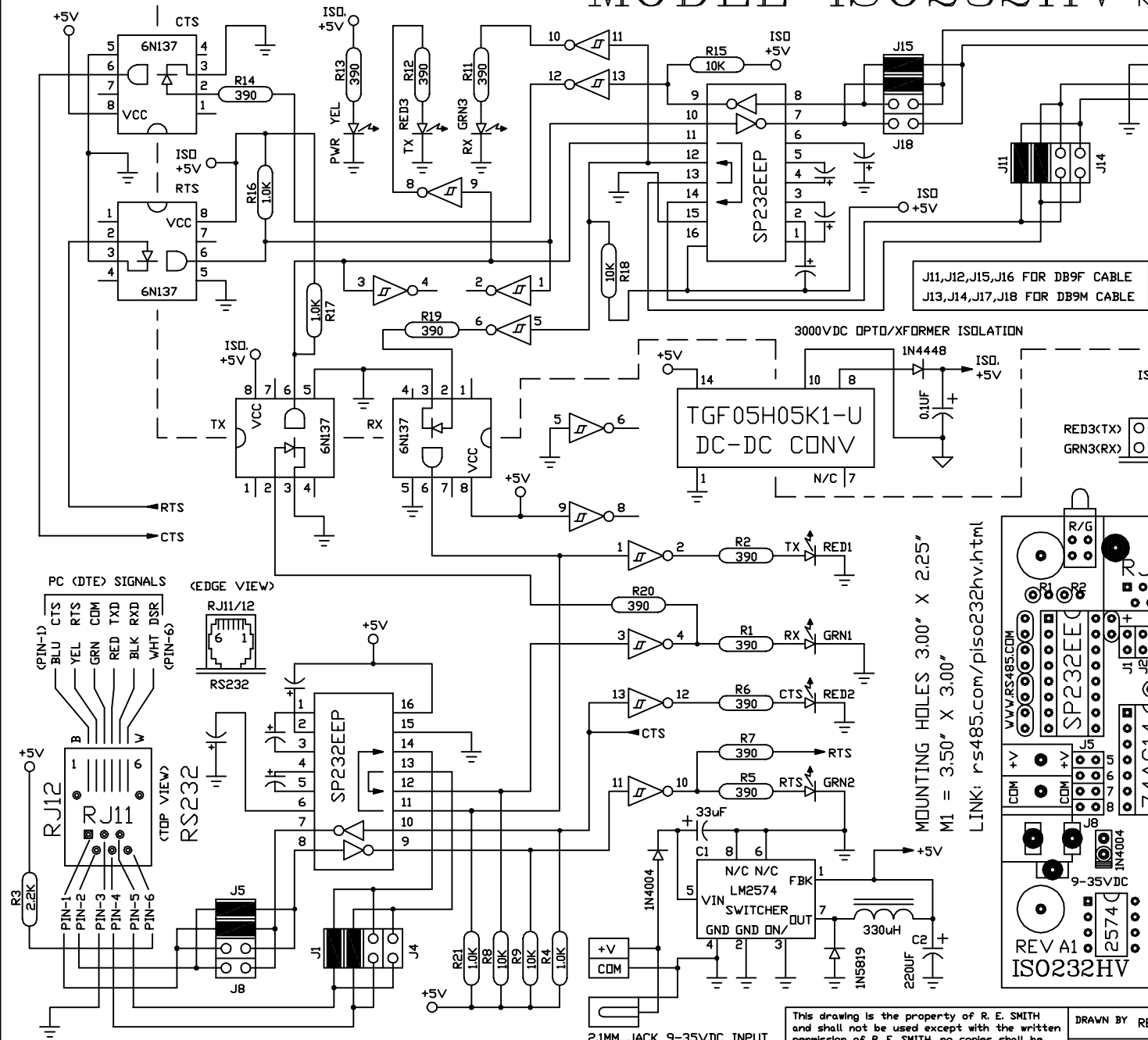


ISOLATED RS232 MODEL ISO232HV REV A1

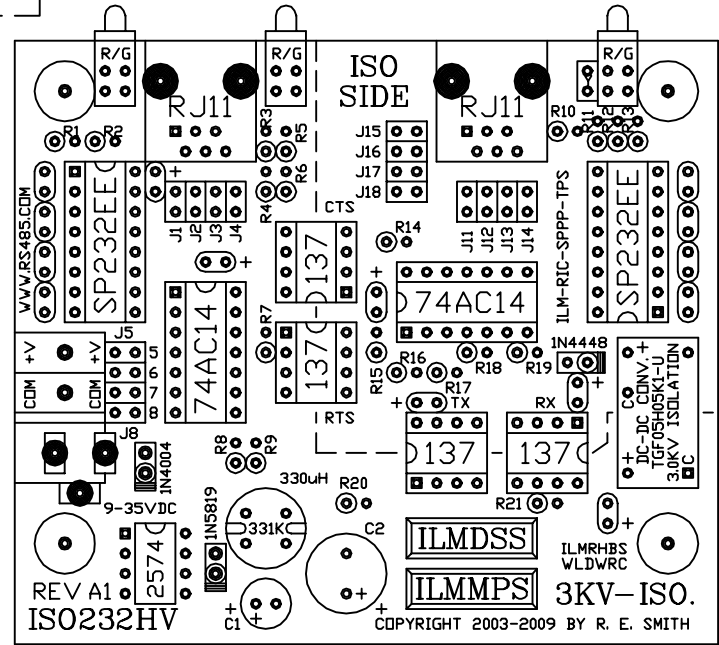
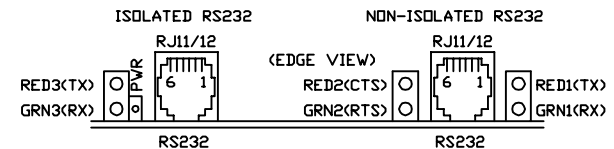
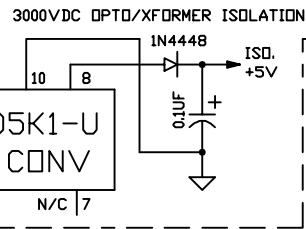
RS232
RJ12
(TOP VIEW)

(PIN-1) BLU CTS
YEL RTS
GRN CDM
RED TXD
BLK RXD
WHT DSR
(PIN-6)

RESSmith
WWW.RS485.COM
10330 CHESTER ROAD, CINCINNATI, OHIO 45215
513-874-4796



J11, J12, J15, J16 FOR DB9F CABLE
J13, J14, J17, J18 FOR DB9M CABLE



MOUNTING HOLES 3.00" X 2.25"
M1 = 3.50" X 3.00"
LINK: rs485.com/plso232hv.html

JUMPER INSTALLED
(FACTORY SETTING)

www.rs485.com

This drawing is the property of R. E. SMITH and shall not be used except with the written permission of R. E. SMITH, no copies shall be made of it and all proprietary rights in the matter contained in this drawing are the property of R. E. SMITH. COPYRIGHT - R. E. SMITH, 2003-2014		DRAWN BY RES	SUBJECT RS232/RS232
DATE 9-28-03 REV 10-26-13		FOR 3000VDC ISOLATED	
SCALE NONE		RES R. E. SMITH 10330 CHESTER ROAD CINCINNATI, OH 45215	DWG. NO. ISO232HV
SHEET 1 OF 1	ISO232HV	CHKD. BY RES	REV. A1