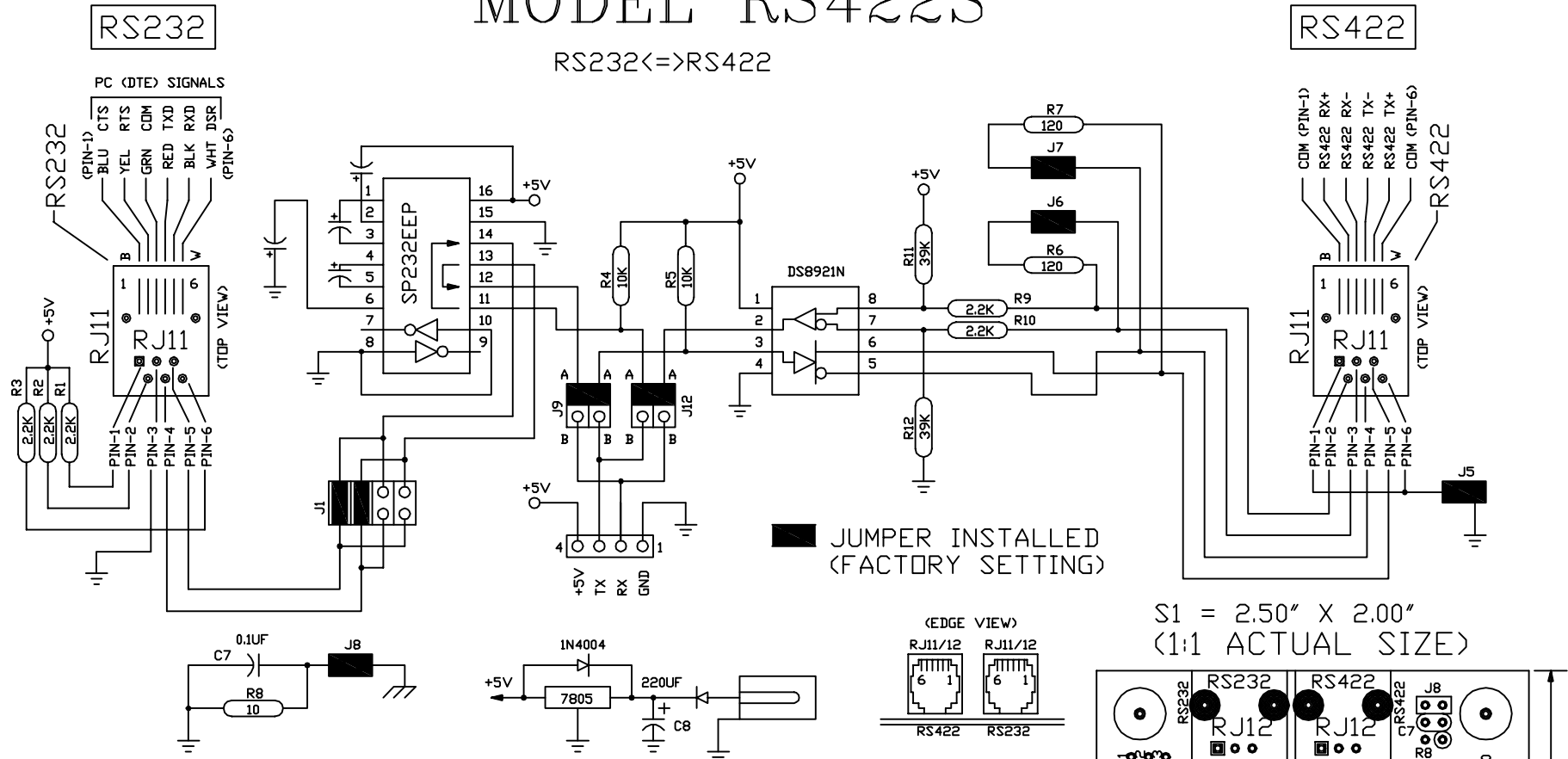


MODEL RS422S

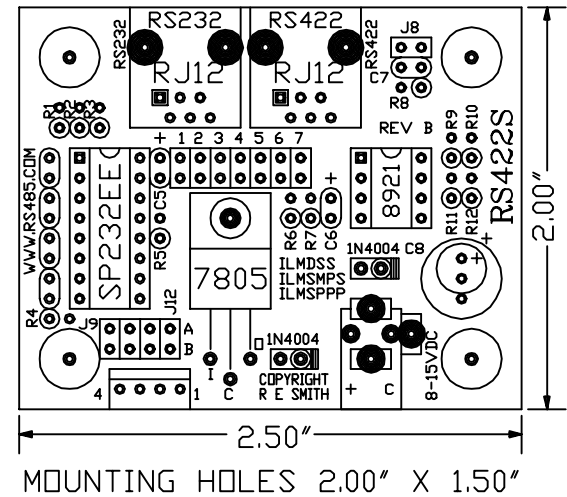
RS232C ↔ RS422



NOTE: TO FORM AN RS232C "EXTENSION CORD" USE A 6-WIRE REVERSING "TELEPHONE" CABLE TO CONNECT TWO RS422S UNITS VIA THE RS422 PORTS. FOR COMPUTER TO COMPUTER OPERATION INSTALL J1&J2 ON BOTH UNITS. FOR COMPUTER TO MODEM OPERATION REMOVE J1&J2 ON THE MODEM UNIT AND INSTALL J3&J4.

LINK: rs485.com/prs422s.html

S1 = 2.50" X 2.00"
(1:1 ACTUAL SIZE)



RESSmith
www.rs485.com
 10330 CHESTER ROAD, CINCINNATI, OHIO 45215
 513-874-4796

www.rs485.com

This drawing is the property of R. E. SMITH and shall not be used except with the written permission of R. E. SMITH, no copies shall be made of it and all proprietary rights in the matter contained in this drawing are the property of R. E. SMITH. COPYRIGHT - R. E. SMITH, 1997-2013		DRAWN BY RES	SUBJECT MODEL RS422S
SHEET 1 OF 1		DATE 2-27-08	FOR RS232C TO RS422/TTL
RS422S		SCALE NONE	RES R. E. SMITH 10330 CHESTER ROAD CINCINNATI, OH 45215
CHKD. BY RES		DWG. NO. RS422S	REV. B