

MODEL SMFCOMX

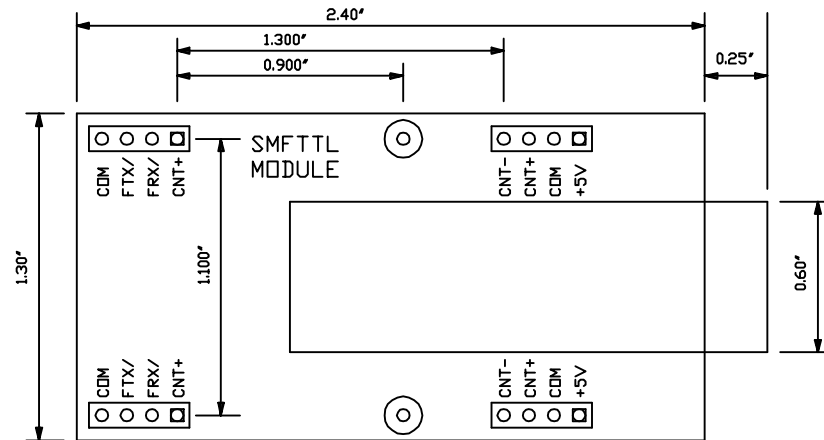
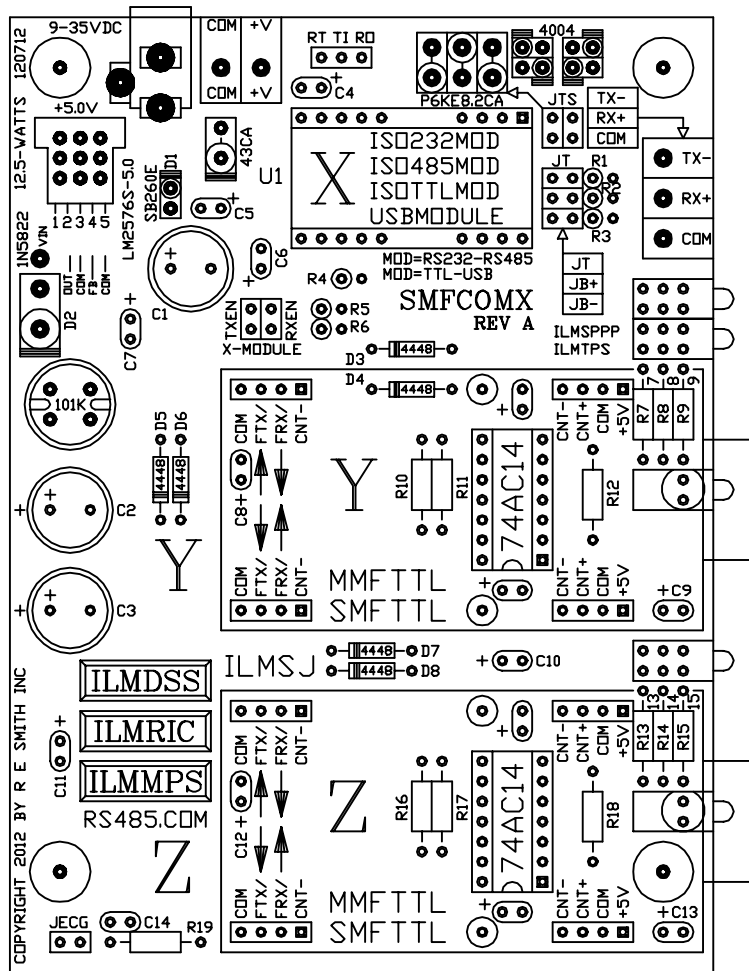
(HALF-DUPLEX ONLY**) REV A

LINK: rs485.com/psmfcomx.html

** 2 MODULE FULL-DUPLEX IS POSSIBLE; HOWEVER, 3 MODULES = HALF-DUPLEX ONLY.
 SMFCOMX-IS0232MOD MULTI-MODE FIBER<=>2.0KV ISOLATED RS232 UP TO 460.8KBPS
 SMFCOMX-IS0485MOD MULTI-MODE FIBER<=>2.5KV ISOLATED RS485 UP TO 921.6KBPS
 SMFCOMX-IS0TTLMOD MULTI-MODE FIBER<=>2.5KV ISOLATED TTL/CMOS UP TO 921.6KBPS
 SMFCOMX-USBMODULE MULTI-MODE FIBER<=>NON-ISOLATED USB UP TO 921.6KBPS

SEVERAL CONFIGURATIONS (ABOUT 20+) WILL BE AVAILABLE USING VARIOUS "PLUG-IN MODULES" TO IMPLEMENT CONVERTER-REPEATER PRODUCTS, WITH RS232, RS485, USB, TTL INTERFACES (X), SINGLE-MODE & MULTI-MODE FIBER ALSO (Y&Z), FOR HALF-DUPLEX SYSTEMS, WITH LIMITED 2-MODULE CONFIGURATIONS FOR FULL-DUPLEX.

SINGLE MODE TYPE "A" or "B" MODULE FOR PLUG-IN POSITIONS Y & Z



SINGLE MODE SC or LC FIBER CONNECTORS
 SHORT CONVERSION CABLES WILL BE AVAILABLE
 FOR ST AND OTHER FIBER CONNECTIONS TYPES.

L3 = 4.75" X 3.50'



OPERATING TEMP RANGE -40C TO 85C
 RH= 10% TO 90% NON-CONDENSING

OTHER ITEMS
 OPTIONAL CONFORMAL COATING,
 ENCLOSURE, FIBER CABLES &
 12VDC@1A WALL POWER SUPPLY

This drawing is the property of R. E. SMITH and shall not be used except with the written permission of R. E. SMITH, no copies shall be made of it and all proprietary rights in the matter contained in this drawing are the property of R. E. SMITH. COPYRIGHT - R. E. SMITH, 2000-2014		DRAWN BY RES	SUBJECT FIBER<=>ISO. MODs
		DATE 11-19-12 REV 10-29-13	FOR AUTO CONVERSION
		SCALE NONE	
SHEET 1 OF 1	SMFCOMX-SS	CHKD. BY RES	RES R. E. SMITH 10330 CHESTER ROAD CINCINNATI, OHIO 45215
			DWG. NO. SMFCOMX-SS REV. A