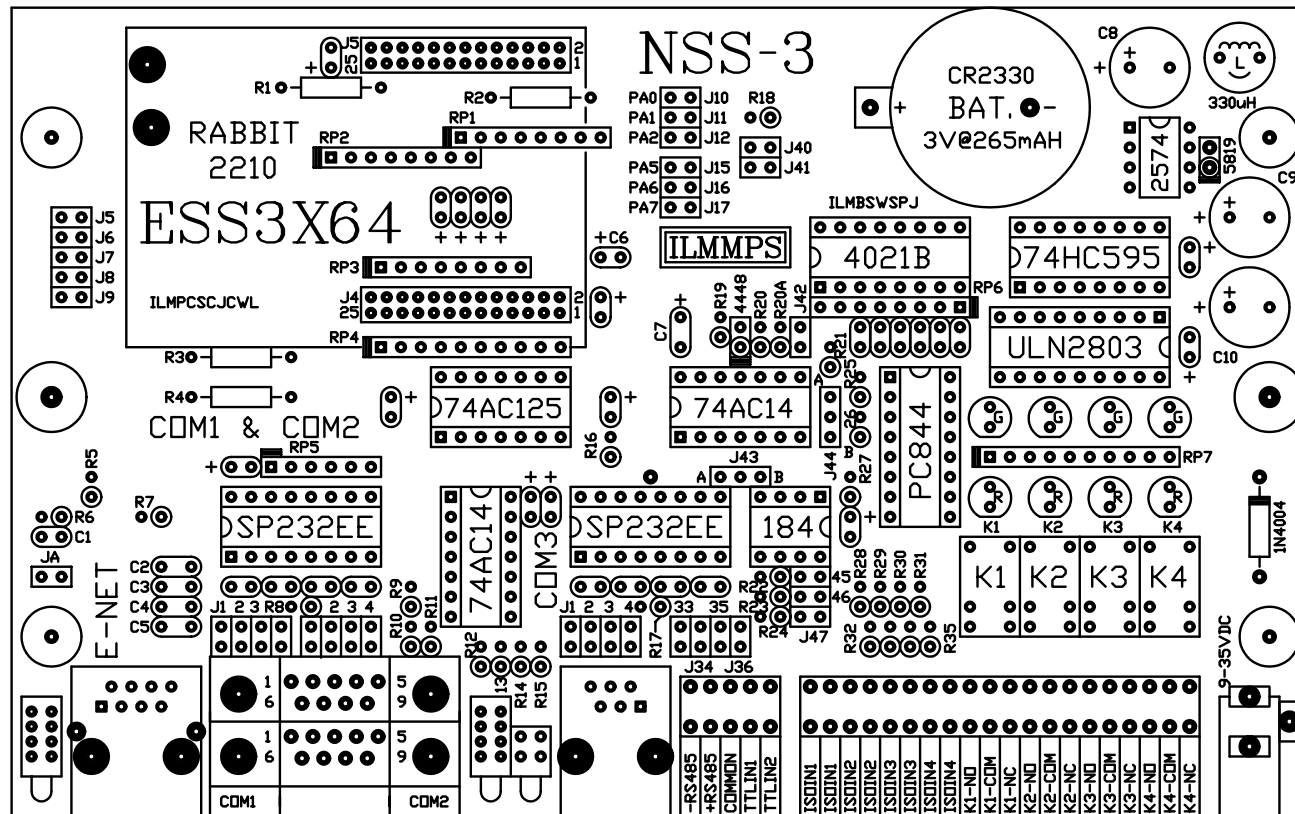


MODEL NSS-3/ESS3X64 REV. A

PRELIMINARY INFORMATION



2 RS232 PORTS, 1 RS232/RS485 PORT, 4 OPTO ISOLATED INPUTS, 4 FORM-C RELAY OUTPUTS, 2 TTL/COMS INPUTS, 10 BASE T ETHERNET CONNECTION, INDICATORS.

R. E. SMITH
4311 TYLERSVILLE RD.
HAMILTON, OHIO 45011
513-874-4796

www.rs485.com

This drawing is the property of R. E. SMITH and shall not be used except with the written permission of R. E. SMITH, no copies shall be made of it and all proprietary rights in the matter contained in this drawing are the property of R. E. SMITH. COPYRIGHT - R. E. SMITH, 2002		DRAWN BY RES	SUBJECT ENET<=>RS232/485	
		DATE 9-5-02	FOR ENET SERIAL SERVER	
SHEET 1 OF 1		SCALE NONE	RES R. E. SMITH 4311 TYLERSVILLE RD. HAMILTON, OHIO 45011	
ESS3X64SS		CHKD. BY RES	DVG. NO. ESS3X64SS	
			REV. A	