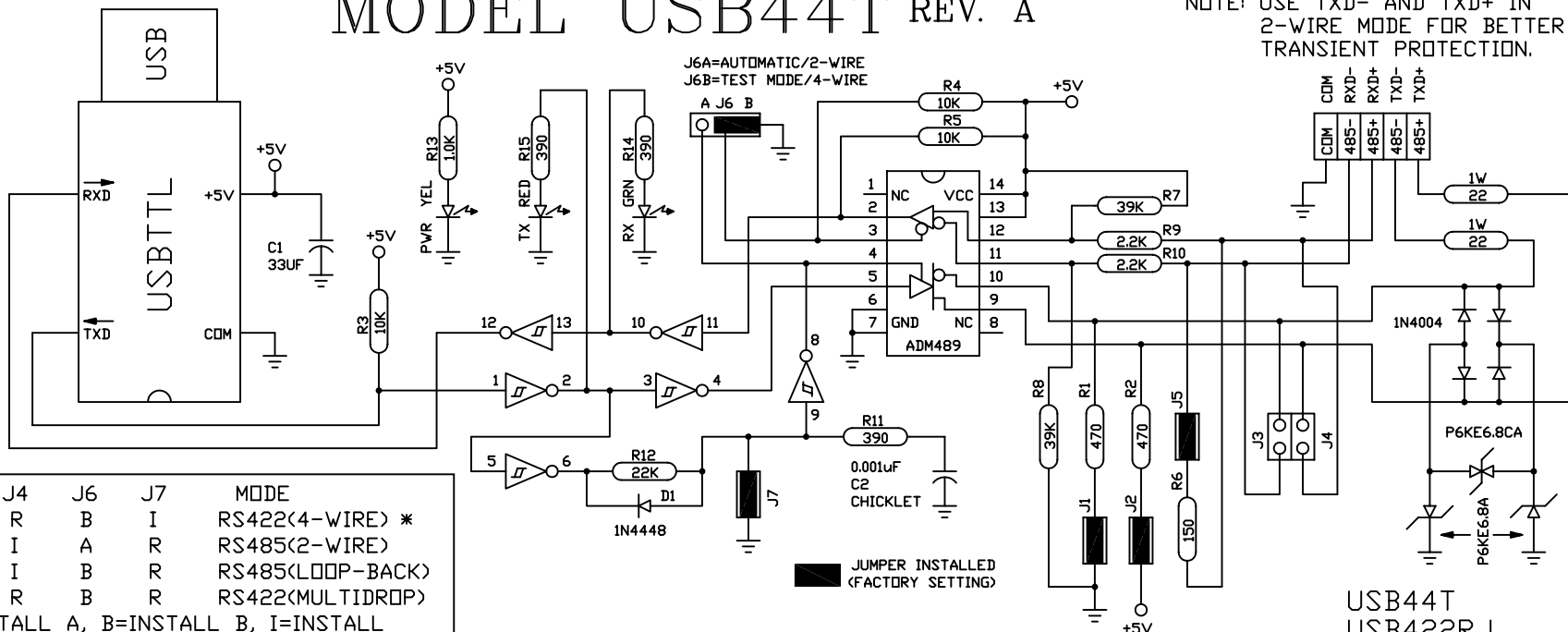


## MODEL USB44T REV. A

NOTE: USE TXD- AND TXD+ IN  
2-WIRE MODE FOR BETTER  
TRANSIENT PROTECTION.



J3	J4	J6	J7	MODE
R	R	B	I	RS422(4-WIRE) *
I	I	A	R	RS485(2-WIRE)
I	I	B	R	RS485(LOOP-BACK)
R	R	B	R	RS422(MULTIDROP)

A=INSTALL A, B=INSTALL B, I=INSTALL  
R=REMOVE, \*=FACTORY DEFAULT SETTING  
J1=BIAS-, J2=BIAS+, J5=TERMINATION

## GENERAL INFO.

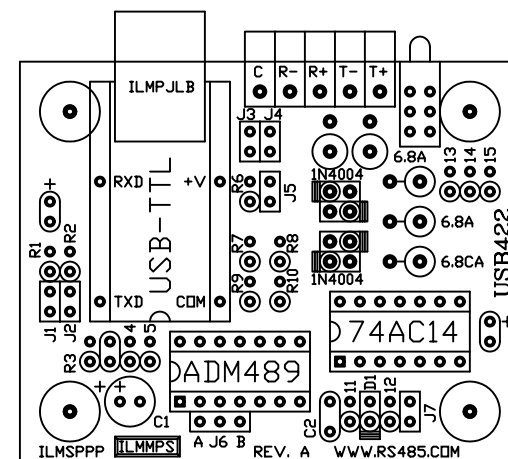
FAST AUTOMATIC, AUTO TX-ENABLE  
USB TO RS485/422 CONVERTER FOR  
2/4-WIRE APPLICATIONS AT DATA  
RATES UP TO 230.4KBPS. LEDs FOR  
POWER, TX DATA, RX DATA, PLUS  
ONBOARD BIAS & TERMINATION, WITH  
ADM489 SHORT-CIRCUIT PROTECTED  
DRIVER IC. TEST MODE JUMPER,  
SUPERIOR DISCRETE TRANSIENT  
PROTECTION FOR INDUSTRIAL APPS.

## SPECIFICATIONS

- 1) SIZE: 2.50" X 2.00" X 1.2" (PC BOARD)  
WITH CONNECTORS: 2.50" X 2.50"
- 2) MOUNTING HOLES: 4-PLACES  
2.00" X 1.50" (#6 HARDWARE)
- 3) ADM489 RS485/422 DRIVER IC  
WITH SHORT-CIRCUIT PROTECTION
- 4) TEMPERATURE RANGE: 0C TO +70C
- 5) HUMIDITY: 10-90% RH NON-CONDENSING
- 6) BAUD: 300-230.4K (LIMITED SLEW)
- 7) SPECIAL UNITS TO 921.6KBPS
- 8) TYPICAL POWER: UNDER 0.5W
- 9) HALF-DUPLEX 2-WIRE RS485
- 10) FULL-DUPLEX 4-WIRE RS485/422

USB44T  
USB422RJ  
USB24CAT  
555980-1 (RJ10)

ACTUAL SIZE (1:1)



www.rs485.com

This drawing is the property of R. E. SMITH and shall not be used except with the written permission of R. E. SMITH, no copies shall be made of it and all proprietary rights in the matter contained in this drawing are the property of R. E. SMITH.

COPYRIGHT - R. E. SMITH, 2000-2006

DRAWN BY	RES
DATE	1-14-06
SCALE	NONE

SUBJECT	USB<=>RS485/422
FOR	AUTOMATIC CONV.

RES	R. E. SMITH 4311 R. E. SMITH DRIVE HAMPTON, VIRG 23061	DWG. NO. USB44T	REV. A
-----	--	--------------------	-----------

REV
A