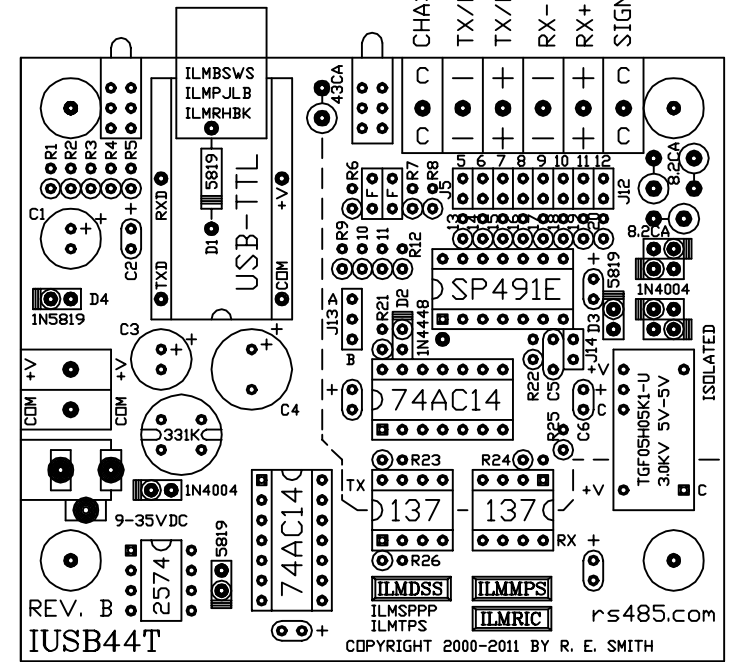
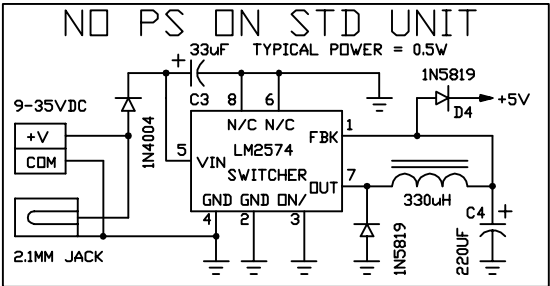


NOTE: USE TX- & TX+ FOR 2-WIRE RS485

LINK: [rs485.com/pusb44t.html](http://rs485.com/pusb44t.html)  
 M2 = 3.50" X 3.00"

| J5 | J6 | J7 | J8 | J9 | J10 | J11 | J12 | J13 | J14 | MODE/NOTES       |
|----|----|----|----|----|-----|-----|-----|-----|-----|------------------|
| R  | R  | I  | I  | I  | I   | I   | I   | A   | I   | RS422(4-WIRE) *  |
| I  | I  | R  | R  | R  | I   | I   | I   | B   | R   | RS485(2-WIRE)    |
| I  | I  | R  | R  | R  | I   | I   | I   | A   | R   | RS485(LOOP-BACK) |
| R  | R  | I  | I  | I  | I   | I   | I   | A   | R   | RS422(MULTIDROP) |

A=INSTALL A, B=INSTALL B, I=INSTALL, R=REMOVE  
 \*=FACTORY DEFAULT SETTING



MODEL REV. B  
 IUSB44T

This drawing is the property of R. E. SMITH and shall not be used except with the written permission of R. E. SMITH. No copies shall be made of it and all proprietary rights in the matter contained in this drawing are the property of R. E. SMITH.  
 COPYRIGHT - R. E. SMITH, 2000-2013

DRAWN BY RES  
 DATE 7-16-10  
 REV 9-20-13  
 SCALE NONE  
 CHKD. BY RES

SUBJECT "AUTO" RS485/RS422  
 FOR ISOLATED 2/4-WIRE  
 R. E. SMITH  
 10330 CHESTER ROAD  
 CINCINNATI, OH 45215  
 DVG. NO. IUSB44T  
 REV. B