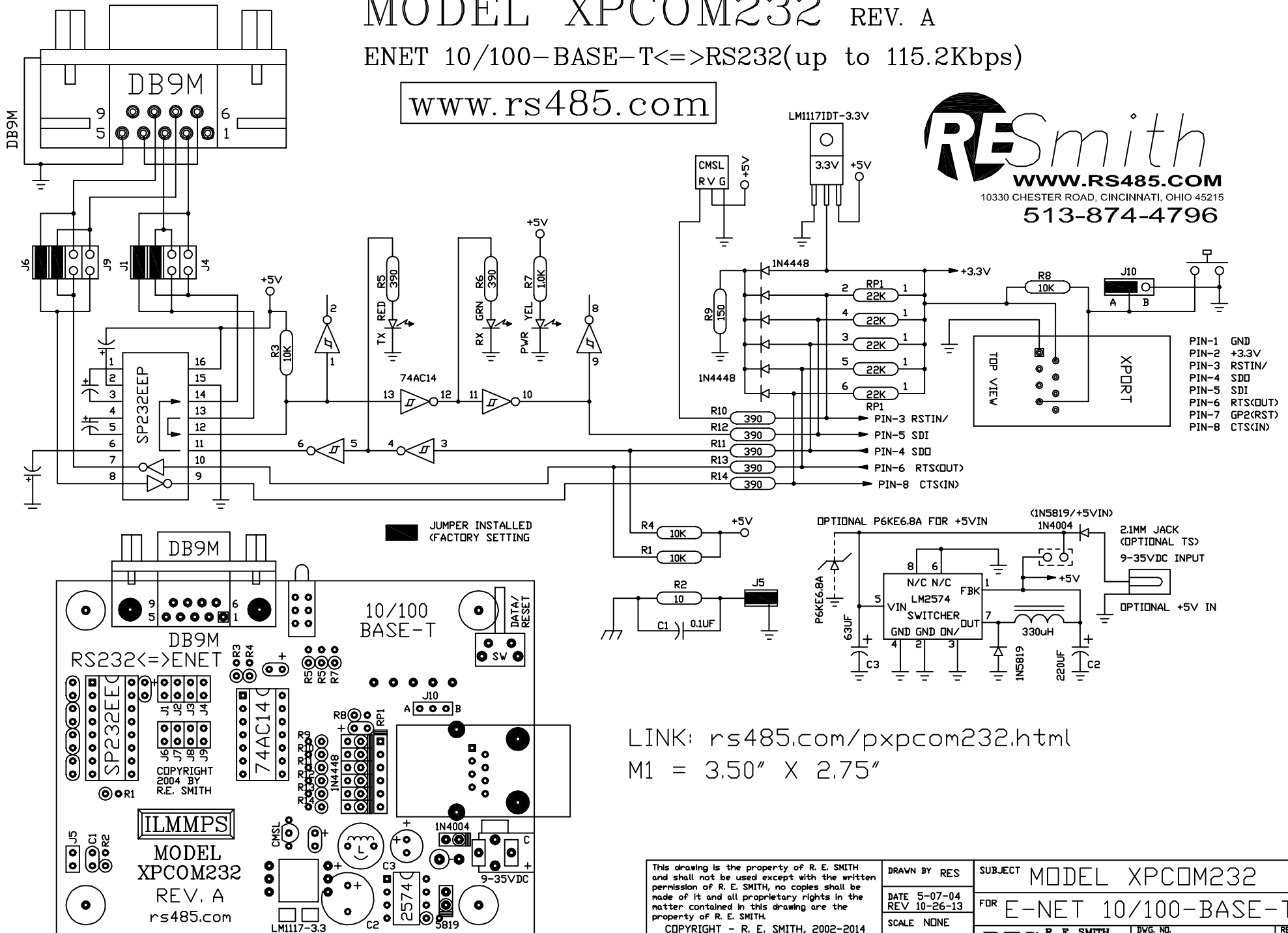


MODEL XPCOM232 REV. A

ENET 10/100-BASE-T<=>RS232(up to 115.2Kbps)

www.rs485.com



LINK: rs485.com/pxpcom232.html
M1 = 3.50" X 2.75"

This drawing is the property of R. E. SMITH and shall not be used except with the written permission of R. E. SMITH, no copies shall be made of it and all proprietary rights in the matter contained in this drawing are the property of R. E. SMITH. COPYRIGHT - R. E. SMITH, 2002-2014		DRAWN BY RES	SUBJECT MODEL XPCOM232
SHEET 1 OF 1		DATE 5-07-04 REV 10-26-13	FOR E-NET 10/100-BASE-T
XPCOM232		SCALE NONE	RES R. E. SMITH 10330 CHESTER ROAD CINCINNATI, OH 45215
CHKD. BY RES		DWG. NO. XPCOM232	REV. A