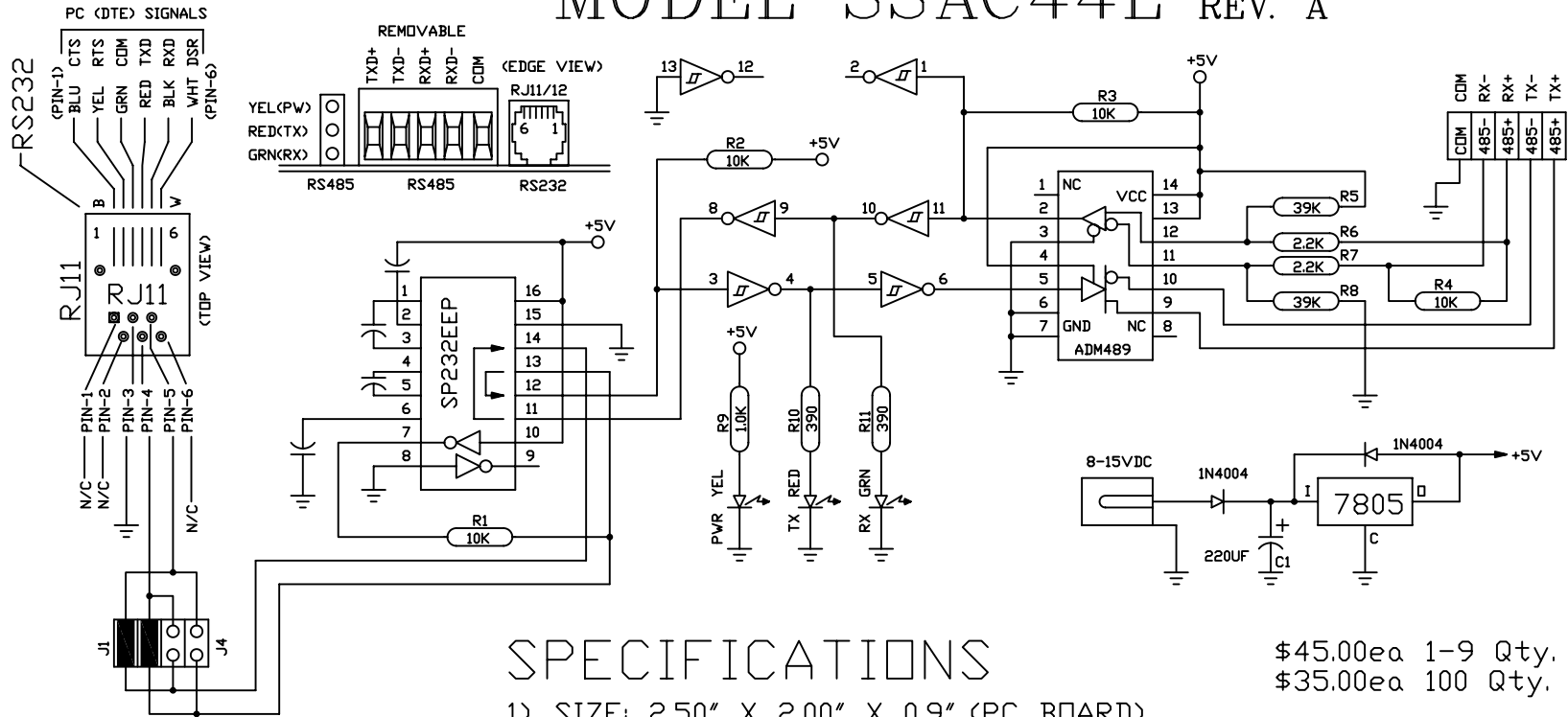


MODEL SSAC44L REV. A



GENERAL INFO.

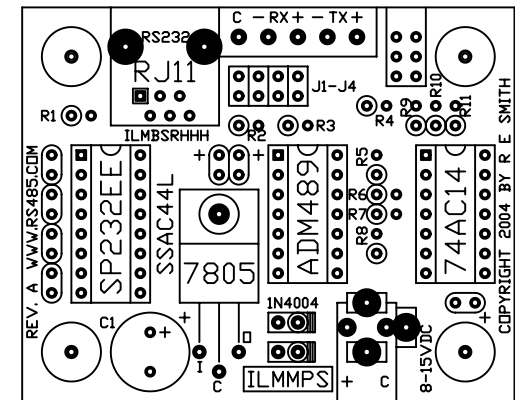
RS232 TO RS485 CONVERTER FOR 4-WIRE APPLICATIONS AT BAUD RATES UP TO 115.2K. LIMITED SLEW RATE DRIVERS WITH LED INDICATORS FOR PWR, TXD & RXD

SPECIFICATIONS

- 1) SIZE: 2.50" X 2.00" X 0.9" (PC BOARD)
WITH CONNECTORS: 2.50" X 2.65"
- 2) MOUNTING HOLES: 4-PLACES
2.00" X 1.50" (#6 HARDWARE)
- 3) LIMITED SLEW RATE RS485
DRIVER (ADM489) IC.
- 4) TEMPERATURE RANGE: -40C TO 85C
- 5) HUMIDITY: 10-90% RH NON-CONDENSING
- 6) BAUD: 300-115.2K (LIMITED SLEW)
- 7) OPERATING VOLTAGE: 8-15VDC
- 8) TYPICAL POWER: UNDER 0.5W
- 9) FULL-DUPLEX POINT-TO-POINT
4-WIRE RS422/RS485

\$45.00ea 1-9 Qty.
\$35.00ea 100 Qty.

ACTUAL SIZE (1:1)



RESmith
WWW.RS485.COM
4311 R. E. Smith Drive, Hamilton, Ohio 45011
513-874-4796

OPTIONAL ENCLOSURE,
CABLE (DB9F OR DB25F),
AND POWER SUPPLY
ARE AVAILABLE.

This drawing is the property of R. E. SMITH and shall not be used except with the written permission of R. E. SMITH, no copies shall be made of it and all proprietary rights in the matter contained in this drawing are the property of R. E. SMITH.
COPYRIGHT - R. E. SMITH, 2000-2004

SHEET 1 OF 1

SSAC44L

DRAWN BY RES

DATE 7-27-04

SCALE NONE

CHKD. BY RES

SUBJECT RS232/RS485

FOR AUTOMATIC CONV.

RES R. E. SMITH
4311 TYLERSVILLE RD.
HAMILTON, OHIO 45011

DWG. NO.

SSAC44L

REV.

A

COPYRIGHT 2004 BY R. E. SMITH