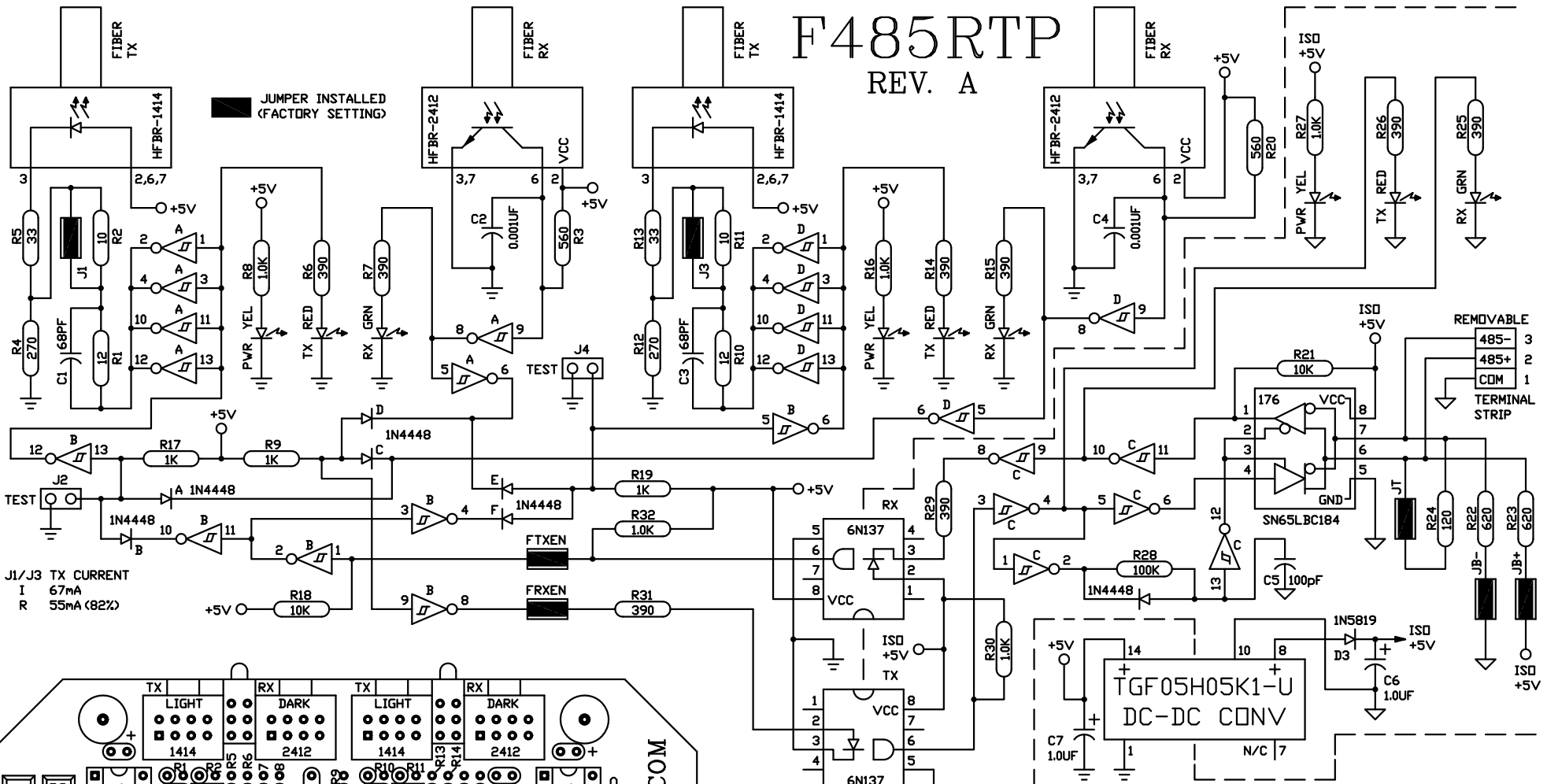
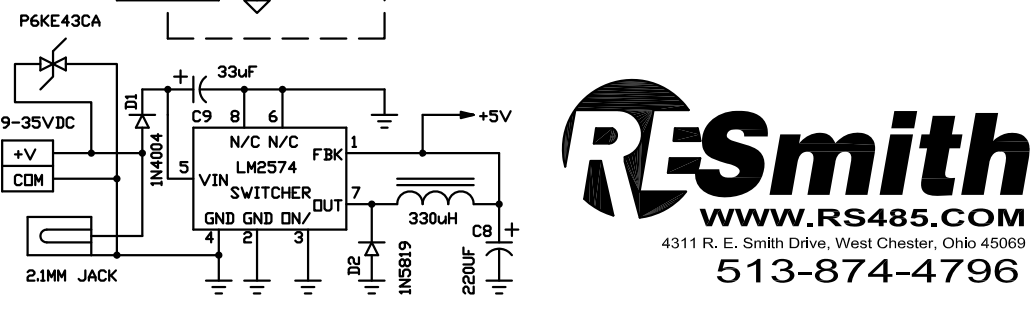
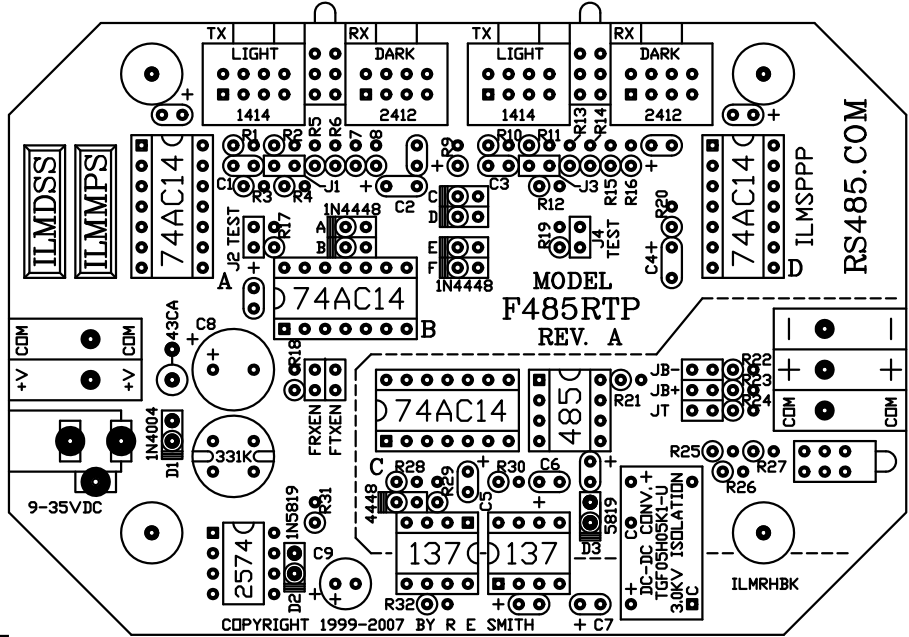


F485RTP

REV. A



J1/J3 TX CURRENT
 I 67mA
 R 55mA (82%)



RESmith
 WWW.RS485.COM
 4311 R. E. Smith Drive, West Chester, Ohio 45069
 513-874-4796

This drawing is the property of R. E. SMITH and shall not be used except with the written permission of R. E. SMITH, no copies shall be made of it and all proprietary rights in the matter contained in this drawing are the property of R. E. SMITH. COPYRIGHT - R. E. SMITH, 2001-2007		DRAWN BY RES		SUBJECT FIBER-REPEATER &	
SHEET 1 OF 1		DATE 6-24-07		FOR ISO. RS485 TAP PT.	
F485RTP		SCALE NONE		RES R. E. SMITH DVG. NO. F485RTP REV. A	
CHKD. BY RES				WEST CHESTER, OHIO 45069	